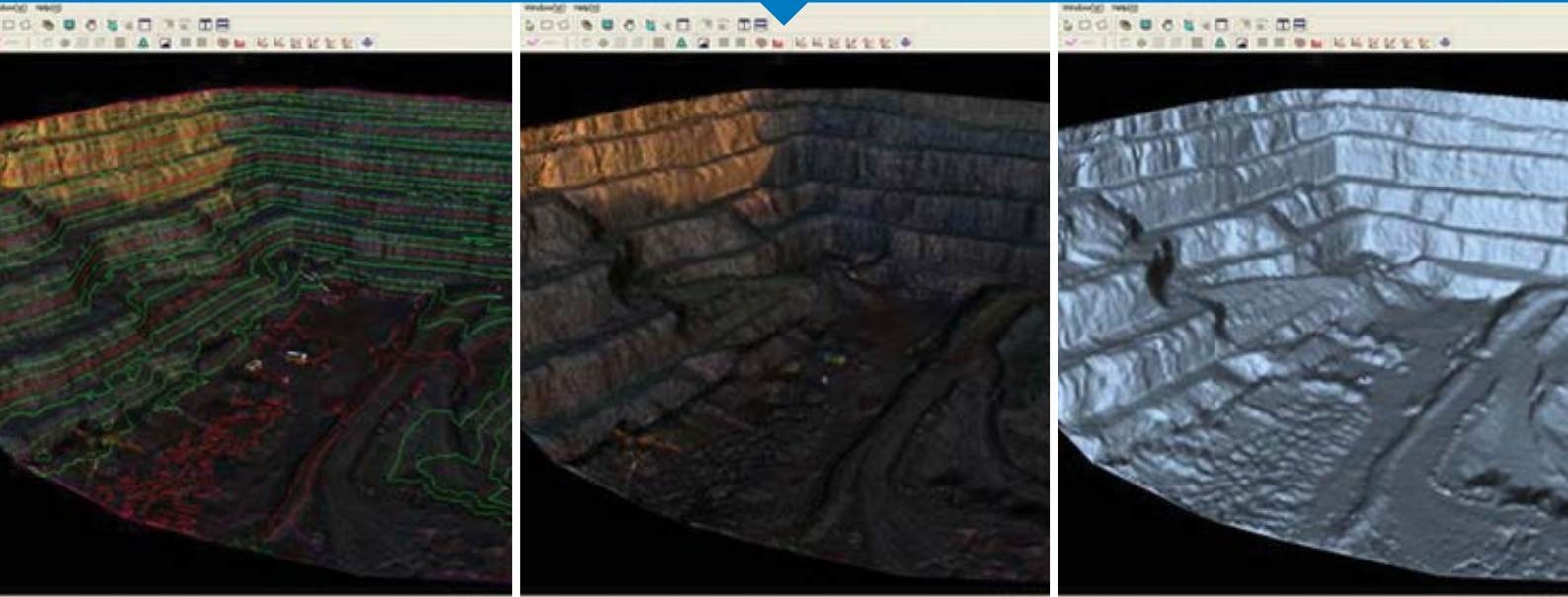




IMAGEMASTER

IMAGING STATION CONTROL AND
3D IMAGE MODELER SOFTWARE



A powerful combination

ImageMaster software is available in three editions, IS, Standard and PRO. This powerful combination of functionality allows you to accomplish everything from Imaging Station wireless control of measurements to 3D module generation using stereopair photographs.

Applications

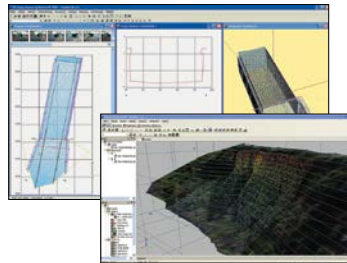
Topcon's ImageMaster PRO has modeling, measurement, mapping and interpretation functionality for a wide variety of applications:

- Close range photogrammetric
- Aerial photogrammetry
- Architecture
- Archeology
- Disaster monitoring/mapping
- Mining
- As built civil and industrial
- Accident investigation
- 3D modeling and visualization

Hardware requirements

- Digital camera with preferred minimum of 5 megapixel
- Personal computer with:
 - CPU Pentium 4, 2.0 GHz
 - Memory 512 MB
 - Graphical solution OpenGL
 - OS Windows® 98, ME, 2000, XP, 7
 - USB or printer port for hardware lock

Choose the Edition that Suits Your Measurement and 3D Modeling Needs



- WLAN control Imaging Station
- Generate 3D models
- Calculate Volumes and Cross Sections (Standard only)
- Stereopair photogrammetry (PRO only)

ImageMaster IS

Control the IS (Imaging Station) via WLAN connection and make 3D TINS and photo textured surfaces from IS collected data. Measure distances from points and surfaces.

ImageMaster Standard

Includes all IS edition features plus additional editing of IS scanned data with full survey tools such as volume and cross section calculations. Outside CAD data can be used as well.

ImageMaster Standard offers full functionality of surveying tools such as polyline creation, contouring, cross sections, TIN generation and editing. Additional functions such as area and volume calculations, ortho-image, and field scan file processing make this module a powerful addition.

ImageMaster PRO

Includes all of the Standard features plus Topcon's advanced photogrammetry solution. ImageMaster PRO software produces models with up to 0.4 mm accuracy for photos taken at a 10 m distance to the object.

ImageMaster PRO uses stereoscopy to create three-dimensional images. Stereoscopes combine images using digital algorithms, providing a digital, rotational image suitable for survey and engineering purposes.



For more information:
topconpositioning.com/imagemaster

Specifications subject to change without notice.
 ©2016 Topcon Corporation All rights reserved.
 7010-2000 D 3/16

