



Solutions Store



2024

TECHNICAL TRAINING CATALOG

JANUARY-APRIL

REGISTER TODAY! topconsolutions.com/training

Training Center Locations





CONSTRUCTION & SURVEY

TOPCON POCKET 3D GNSS

This is an introductory hands-on class designed to familiarize new users of Pocket3D to the fundamentals and workflows necessary for everyday field operation.



IN-PERSON:

2 days

TIME: 8:30-4:30

COST: \$389

OR **Portland**
January 31 - Feb 1
March 13-14

MO **St. Louis**
January 16-17
April 17-18

WA **Seattle**
February 6-7
April 2-3

MD **Annapolis Jct**
February 13-14
April 2-3

WA **Spokane**
February 27-28
April 16-17

CT **Hartford**
February 13-14
April 9-10

IN **Indianapolis**
January 30-31
March 19-20

MA **Stow**
January 2-3
March 5-6

IL **Carol Stream**
January 9-10
March 26-27

PA **Warrendale**
February 7-8
April 10-11

MO **Kansas City**
January 23-24
March 12-13

CONSTRUCTION & SURVEY



TOPCON 3DMC

This fundamental class for Machine Control Operators is designed to familiarize users to the basics of RTK GPS, 3DMC user interface, machine interface, calibration & general operation.



IN-PERSON:

1 day

TIME: 8:30-4:30

COST: \$300

OR **Portland**
March 15

MO **St. Louis**
April 19

WA **Seattle**
February 8

MD **Annapolis Jct**
February 15

WA **Spokane**
April 18

CT **Hartford**
February 15

IN **Indianapolis**
March 21

MA **Stow**
January 4

IL **Carol Stream**
January 11

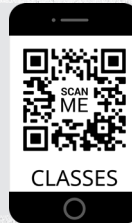
PA **Warrendale**
February 9



CONSTRUCTION & SURVEY

TOPCON MAGNET FIELD GNSS

Learn the fundamental skills every operator will need to become productive in RTK GPS using either a Base/Rover or Network configuration.



IN-PERSON:

2 days

TIME: 8:30-4:30

COST: \$389

OR **Portland**
January 17-18
April 10-11

MO **St. Louis**
January 3-4
March 6-7

WA **Seattle**
January 9-10
March 19-20

MD **Annapolis Jct**
March 19-20

WA **Spokane**
January 23-24
February 13-14

CT **Hartford**
January 30-31
April 23-24

IN **Indianapolis**
February 27-28
April 9-10

MA **Stow**
January 16-17
March 26-27

IL **Carol Stream**
February 6-7
April 17-18

PA **Warrendale**
January 3-4
January 17-18
March 13-14

MO **Kansas City**
February 6-7
April 2-3

CONSTRUCTION & SURVEY



TOPCON MAGNET FIELD ROBOTICS

Learn the fundamental skills every operator will need to become productive using a Conventional or Robotics Total Station.



IN-PERSON:

2 days

TIME: 8:30-4:30

COST: \$389

OR **Portland**
February 21-22
April 24-25

MO **St. Louis**
January 31-Feb 1
April 10-11

WA **Seattle**
February 27-28
April 16-17

MD **Annapolis Jct**
January 9-10
March 5-6

WA **Spokane**
January 2-3
March 26-27

CT **Hartford**
January 9-10
March 12-13

IN **Indianapolis**
January 2-3
April 2-3

MA **Stow**
February 6-7
April 16-17

IL **Carol Stream**
January 2-3
March 5-6

PA **Warrendale**
February 14-15
April 24-25

MO **Kansas City**
January 16-17
February 27-28

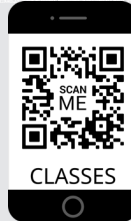


CONSTRUCTION & SURVEY



TOPCON DIGITAL LAYOUT FOR LN-150

This course teaches the fundamental skills necessary for a user to become productive using MAGNET Field Layout and an LN-150/100 for layout/stakeout on a job site.



IN-PERSON:

1 day

TIME: 8:30-4:30

COST: \$300

OR

Portland

January 19
April 12

MO

St. Louis

February 14
March 27

WA

Seattle

January 11
March 21

MD

Annapolis Jct

March 7

WA

Spokane

January 25
February 15

CT

Hartford

February 1
April 25

IN

Indianapolis

January 4
April 4

MA

Stow

January 18
April 18

IL

Carol Stream

January 4
March 7

PA

Warrendale

January 5

MO

Kansas City

February 29
April 4



2D PAVING ESSENTIALS

This course teaches basic principles of 2D asphalt paving as well as the setup and operation of slope sensors, sonic trackers, sonic averaging skis, and control boxes.



IN-PERSON:

1 day

TIME: 8:30-4:30

COST: \$300

CT

Hartford

February 29

PA

Warrendale

February 22

MA

Stow

February 27

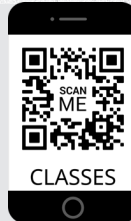


CONSTRUCTION & SURVEY



POCKET 3D: LN-150 FOR MC-MOBILE

Learn the simple steps from start to finish in basic workflows and data completion. Once the project is established we will move onto data collection, surface design, and transferring it to the 3DMC software.



IN-PERSON:

1 day

TIME: 8:30-4:30

COST: \$300

OR **Portland**
April 26

MO **St. Louis**
January 18

WA **Seattle**
April 4

MD **Annapolis Jct**
January 11

WA **Spokane**
January 4

CT **Hartford**
April 11

IN **Indianapolis**
February 1

MA **Stow**
March 7

IL **Carol Stream**
March 28

PA **Warrendale**
March 15

MO **Kansas City**
January 25

CONSTRUCTION & SURVEY



MAGNET FIELD HYBRID

This course starts by going over the software changes and configurations needed for the Hybrid usage as well as supported equipment. Next, we will cover basic day-to-day workflows and setup solutions.



IN-PERSON:

1 day

TIME: 8:30-4:30

COST: \$389

OR **Portland**
February 23

MO **St. Louis**
March 8

IN **Indianapolis**
April 11

MD **Annapolis Jct**
March 21

IL **Carol Stream**
February 8

CT **Hartford**
January 11

MO **Kansas City**
January 18

MA **Stow**
March 28

PA **Warrendale**
February 16



INFRASTRUCTURE DESIGN SOLUTIONS

CIVIL 3D® ESSENTIALS

This course provides you with a foundation for using the dynamic technology of Civil 3D. Everything from importing points and creating surfaces to finished corridor/road design will be covered.



ONLINE:

4 days

TIME: 8:00-2:00 PDT

COST: \$949

IN-PERSON:

3 days

TIME: 8:30-4:30

COST: \$1,195

WEB

Online

January 9-12
February 20-23
March 12-15
April 16-19

WA

Seattle

February 13-15
April 23-25

OR

Portland

January 23-25
March 5-7

WA

Spokane

March 19-21



AUTODESK
BIM Collaborate
Pro

Don't let changes take you by surprise.

Reduce errors and rework by staying up to
date with BIM Collaborate Pro.





GENERAL DESIGN & DRAFTING

AUTOCAD® ESSENTIALS

Learn to use AutoCAD to design and draft in 2D. Upon completion of this course, you will be confident in using AutoCAD to create, layer, edit, modify, annotate, dimension, and prepare sheets for plotting.



ONLINE:

4 days

TIME: 8:00-2:00 PDT

COST: \$949

IN-PERSON:

3 days

TIME: 8:30-4:30

COST: \$1,195

WEB **Online**
January 23-26
February 13-16
March 19-22
April 16-19

CT **Hartford**
March 26-28

OR **Portland**
January 9-11

PA **Warrendale**
February 27-29

WA **Seattle**
April 9-11

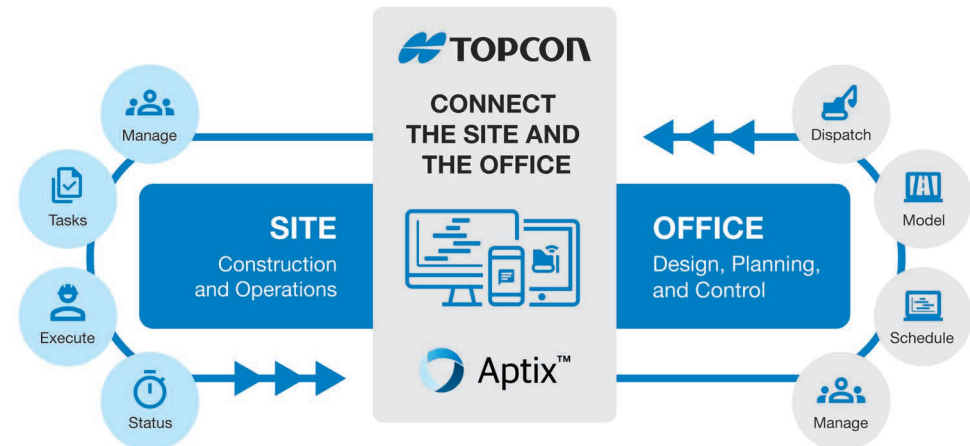


**Improve productivity,
minimize rework and
save time and money**



Meet Aptix - your all-in-one solution for seamless integration of third-party apps and project data in construction. From planning to design and job site operations, it simplifies data exchange, automates workflows, and boosts project efficiencies.

Say goodbye to manual tasks and hello to a more profitable and efficient construction journey with Aptix!



topconsolutions.com/aptix





BUILDING DESIGN SOLUTIONS

REVIT® ARCHITECTURE ESSENTIALS

Get introduced to Revit Architecture while learning the fundamental concepts of Building Information Modeling (BIM). Learn how to model essential building elements in 3D such as walls, stairs, doors, windows, etc.



ONLINE:

4 days

TIME: 7:00-1:00 PDT

COST: \$949

Online

WEB

January 2-5

January 30- February 2

March 5-8

April 23-26

REVIT® MEP ESSENTIALS

Learn the essentials of Revit Mechanical, Electrical, and Plumbing. Learn how to navigate and monitor changes, create schedules, details, legends, sheets, & other views of your model to create your construction document set.



ONLINE:

2 days

TIME: 8:00-2:00 PDT

COST: \$749

Online

WEB

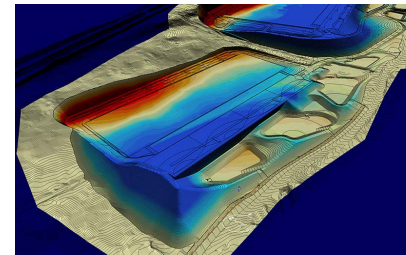
January 23-24

February 13-14



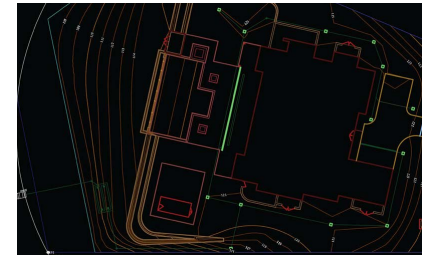
Your one source solution for Earthwork Takeoffs and GPS Modeling needs

EARTHWORK TAKEOFFS | MODELS FOR GPS | FIELD SERVICES



Earthwork Takeoffs

The process of turning 2-D grading plans into a 3-D 'earthwork takeoff' used by contractors for project bids



GPS Modeling

We convert a two-dimensional, construction plan to a three-dimensional, electronic model

Topcon Solutions' Dirt Logic offering assists contractors, developers and civil engineers at any stage of a project to determine the most efficient way to deal with site grading. We provide practical 'what if' scenarios and solutions for any sized project, which reduces risk, project costs and overall design time.

topconsolutions.com/dirtlogic



CALL NOW! (855) 289-1772 | 17



COLLABORATION

BLUEBEAM REVU ESSENTIALS

Revu is built primarily for technical industries like architecture, engineering, construction, and oil & gas. Learn to streamline workflows throughout the construction process, from design review to project closeout and facilities management.



ONLINE:

2 days

TIME: 8:00-2:00 PDT

COST: \$749

WEB

Online

January 9-10

April 2-3



PROFESSIONAL SERVICES GROUP



CUSTOMER CARE SUPPORT PROGRAM

We work hard to make sure you have the support you need when you need it. Whether on the job site or in the office, we can help!

STANDARD PREMIUM

Response time	2 Hour	Priority
Unlimited phone & email technical support	✓	✓
Remote desktop assistance	✓	✓
New customer & annual guided account navigation	✓	✓
10% discount on public training classes		✓
10% discount on consulting & custom training		✓
Unlimited access to Solutions U		✓
Autodesk Briefcase tools plug-in (ADSK customers only)		✓



**YEAR-ROUND
TRAINING
SCHEDULE**



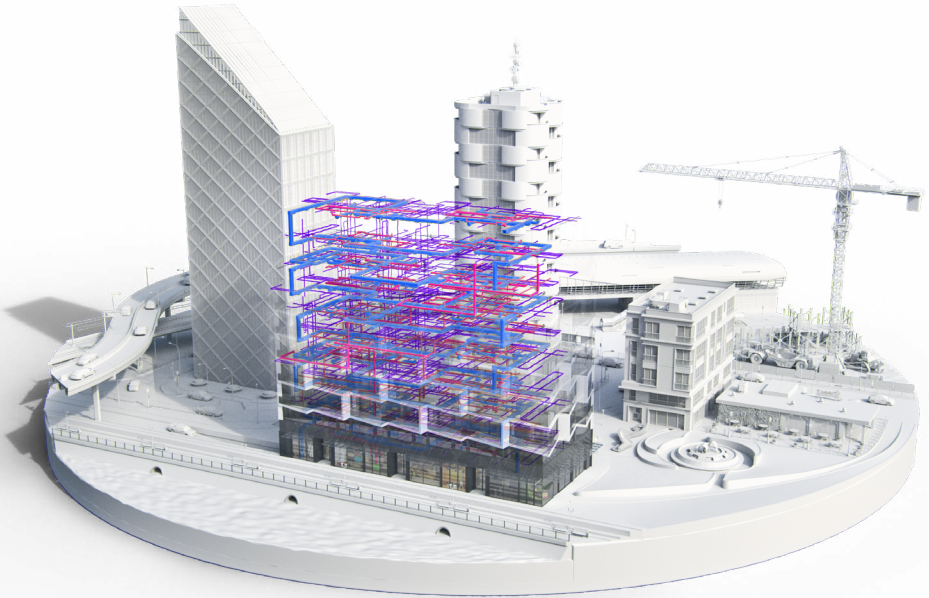
**TOPCON
SOLUTIONS
UNIVERSITY – ON
DEMAND TRAINING
COURSES**



**TECH SUPPORT
PHONE &
REMOTE
DESKTOP**



Solutions Store



 **AUTODESK**
Platinum Partner

TOPCONSOLUTIONS.COM

(855) 289-1772

REGISTER TODAY! topconsolutions.com/training