

# TECHNICAL TRAINING CATALOG

**2024**  
MAY - AUGUST



 **TOPCON**

**Solutions Store**

**REGISTER TODAY!** [topconsolutions.com/training](https://topconsolutions.com/training)

# Elevating Excellence through Technology & Expertise

# Training Center Locations

Topcon Solutions serves the AEC industry as the retail division to Topcon Positioning Systems and an Autodesk Platinum Partner. The technology offerings, workflows, and productivity solutions between these two brands is why Topcon Solutions is a leader in the industry. Our vast product portfolio, technical expertise across brands, and business savvy industry knowledge is unmatched. Supporting our customers with training, technical support, consulting and repair is our specialty.



Topcon Solutions US Locations

## ANNAPOLIS JCT

10820 Guilford Rd. Suite 205  
Annapolis Junction, MD 20701

## BOISE

10933 W. Emerald St  
Boise, ID 83714

## CAROL STREAM

297 Commonwealth Dr.  
Carol Stream, IL 60188

## HARTFORD

310 Murphy Rd.  
Hartford, CT 06114

## INDIANAPOLIS

7278 E 86th Street  
Indianapolis, IN 46250

## KANSAS CITY

1700 Cherry Street  
Kansas City, MO 64108

## PORTLAND

6015 NE. 80th Ave. Suite 400  
Portland, OR 97218

## SEATTLE AREA

18040 72nd Avenue South  
Kent, WA 98032

## SPOKANE

1627 E Trent Ave  
Spokane, WA 99202

## ST. LOUIS

12967 Maurer Industrial Dr.  
St. Louis, MO 63127

## WARRENDALE

820 Commonwealth Dr.  
Warrendale, PA 15086

## STOW

873 Great Road  
Stow, MA 01775



## MARLBOROUGH

128 Bartlett St.  
Marlborough, MA 01752



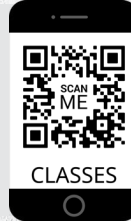
CALL NOW! (855) 289-1772 | 3



# CONSTRUCTION & SURVEY

## TOPCON POCKET 3D GNSS

*This is an introductory hands-on class designed to familiarize new users of Pocket3D to the fundamentals and workflows necessary for everyday field operation.*



### IN-PERSON:

2 days

**TIME:** 8:30-4:30

**COST:** \$389

**OR** Portland  
May 1-2  
July 17-18

**MO** St. Louis  
June 5-6  
July 31-August 1

**WA** Seattle  
June 18-19  
August 13-14

**MD** Annapolis Jct  
June 11-12  
August 6-7

**WA** Spokane  
May 21-22  
July 16-17

**CT** Hartford  
June 18-19  
August 6-7

**IN** Indianapolis  
May 7-8  
July 23-24

**MA** Marlborough  
May 7-8  
July 16-17

**IL** Carol Stream  
May 8-9  
July 24-25

**PA** Warrendale  
June 5-6  
August 7-8

**MO** Kansas City  
May 14-15  
July 9-10

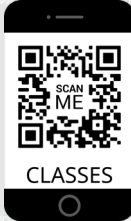
**ID** Boise  
May 29-30



# CONSTRUCTION & SURVEY

## TOPCON 3DMC

*This fundamental class for Machine Control Operators is designed to familiarize users to the basics of RTK GPS, 3DMC user interface, machine interface, calibration & general operation.*



### IN-PERSON:

1 day

**TIME:** 8:30-4:30

**COST:** \$300

**OR** Portland  
July 19

**MO** St. Louis  
August 2

**WA** Seattle  
June 20

**MD** Annapolis Jct  
June 13

**WA** Spokane  
May 23

**CT** Hartford  
August 8

**IN** Indianapolis  
May 9

**MA** Marlborough  
May 9

**IL** Carol Stream  
July 26

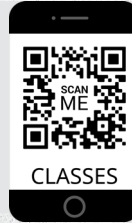
**PA** Warrendale  
August 9



# CONSTRUCTION & SURVEY

## TOPCON MAGNET FIELD GNSS

Learn the fundamental skills every operator will need to become productive in RTK GPS using either a Base/Rover or Network configuration.



### IN-PERSON:

2 days

**TIME:** 8:30-4:30

**COST:** \$389

- OR** **Portland**  
June 5-6  
July 31-August 1
- WA** **Seattle**  
May 14-15  
July 23-24
- WA** **Spokane**  
June 11-12  
August 13-14
- IN** **Indianapolis**  
May 14-15  
August 6-7
- IL** **Carol Stream**  
June 5-6  
August 21-22
- MO** **Kansas City**  
June 11-12  
August 6-7

- MO** **St. Louis**  
May 8-9  
July 17-18
- MD** **Annapolis Jct**  
May 7-8  
July 16-17
- CT** **Hartford**  
June 25-26  
August 27-28
- MA** **Marlborough**  
June 11-12  
July 30-31
- PA** **Warrendale**  
May 22-23  
July 17-18
- ID** **Boise**  
August 27-28



# CONSTRUCTION & SURVEY

## TOPCON MAGNET FIELD ROBOTICS

Learn the fundamental skills every operator will need to become productive using a Conventional or Robotics Total Station.



### IN-PERSON:

2 days

**TIME:** 8:30-4:30

**COST:** \$389

- OR** **Portland**  
May 22-23  
August 21-22
- WA** **Seattle**  
July 9-10  
August 27-28
- WA** **Spokane**  
May 7-8  
July 23-24
- IN** **Indianapolis**  
June 11-12  
August 20-21
- IL** **Carol Stream**  
May 22-23  
July 10-11
- MO** **Kansas City**  
April 30-May 1  
July 23-24

- MO** **St. Louis**  
June 26-27  
August 28-29
- MD** **Annapolis Jct**  
June 25-26  
August 20-21
- CT** **Hartford**  
May 21-22  
July 23-24
- MA** **Marlborough**  
June 4-5  
August 20-21
- PA** **Warrendale**  
June 19-20  
August 21-22
- ID** **Boise**  
July 9-10



# CONSTRUCTION & SURVEY



## TOPCON DIGITAL LAYOUT FOR LN-150

This course teaches the fundamental skills necessary for a user to become productive using MAGNET Field Layout and an LN-150/100 for layout/stakeout on a job site.



### IN-PERSON:

1 day

TIME: 8:30-4:30

COST: \$300

OR

### Portland

June 7  
August 20

MO

### St. Louis

May 23  
July 30

WA

### Seattle

June 12  
August 15

MD

### Annapolis Jct

May 9  
August 8

WA

### Spokane

May 9  
August 15

CT

### Hartford

May 23  
July 25

IN

### Indianapolis

June 13  
August 22

MA

### Marlborough

June 6  
August 22

IL

### Carol Stream

May 24  
July 12

PA

### Warrendale

May 24  
July 19

MO

### Kansas City

May 16  
August 8

# CONSTRUCTION & SURVEY



## TOPCON SITELINK3D V2

This Sitelink v2 online course will cover As-Built Live functionality, and reporting followed by Q&A and a refresher of the Sitelink3D v2 portal.



### ONLINE:

4 hours

TIME: 8:00-12:00

COST: \$300

WEB

### Online

May 15  
June 21  
July 19  
August 14



## Stay aware, even when you aren't there

Sitelink3D remotely syncs design files, assists operators and tracks site activities



# CONSTRUCTION & SURVEY



## POCKET 3D: LN-150 FOR MC-MOBILE

Learn the simple steps from start to finish in basic workflows and data completion. Once the project is established we will move onto data collection, surface design, and transferring it to the 3DMC software.



### IN-PERSON:

1 day

TIME: 8:30-4:30

COST: \$300

**OR** Portland  
August 2

**MO** St. Louis  
June 7

**WA** Seattle  
May 16

**MD** Annapolis Jct  
July 18

**WA** Spokane  
June 13

**CT** Hartford  
June 27

**IN** Indianapolis  
July 25

**MA** Marlborough  
August 1

**IL** Carol Stream  
June 7

**PA** Warrendale  
June 7

**MO** Kansas City  
August 14

**ID** Boise  
July 11



# CONSTRUCTION & SURVEY



## MAGNET FIELD HYBRID

This course starts by going over the software changes and configurations needed for the Hybrid usage as well as supported equipment. Next, we will cover basic day-to-day workflows and setup solutions.



### IN-PERSON:

1 day

TIME: 8:30-4:30

COST: \$389

**OR** Portland  
May 24

**MO** St. Louis  
August 30

**WA** Seattle  
July 25

**MD** Annapolis Jct  
June 27

**WA** Spokane  
July 25

**CT** Hartford  
August 29

**IN** Indianapolis  
August 8

**MA** Marlborough  
June 13

**IL** Carol Stream  
May 10

**PA** Warrendale  
June 21

**MO** Kansas City  
June 13



# INFRASTRUCTURE DESIGN SOLUTIONS

## CIVIL 3D® ESSENTIALS

*This course provides you with a foundation for using the dynamic technology of Civil 3D. Everything from importing points and creating surfaces to finished corridor/road design will be covered.*



### ONLINE:

4 days      **TIME:** 8:00-2:00 PDT      **COST:** \$1,195

### IN-PERSON:

3 days      **TIME:** 8:30-4:30      **COST:** \$1,195

**WEB** **Online**  
May 21-24  
June 11-14  
July 23-26  
August 20-23

**WA** **Seattle**  
May 7-9  
August 6-8

**OR** **Portland**  
June 11-13  
July 30-August 1

**WA** **Spokane**  
June 25-27



# Don't let changes take you by surprise.

Reduce errors and rework by staying up to date with BIM Collaborate Pro.





# GENERAL DESIGN & DRAFTING

## AUTOCAD® ESSENTIALS

Learn to use AutoCAD to design and draft in 2D. Upon completion of this course, you will be confident in using AutoCAD to create, layer, edit, modify, annotate, dimension, and prepare sheets for plotting.



### ONLINE:

4 days

**TIME:** 8:00-2:00 PDT

**COST:** \$1,195

### IN-PERSON:

3 days

**TIME:** 8:30-4:30

**COST:** \$1,195

**WEB** Online  
May 21-24  
June 11-14  
July 30-August 2  
August 27-30

**CT** Hartford  
June 4-6

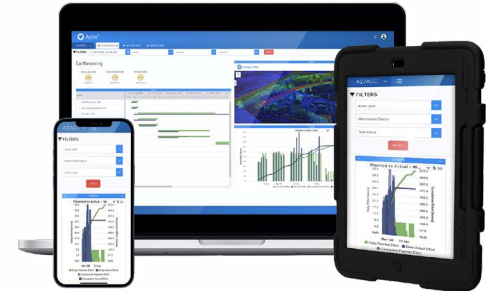
**OR** Portland  
May 14-16

**PA** Warrendale  
June 11-13

**WA** Seattle  
July 16-18

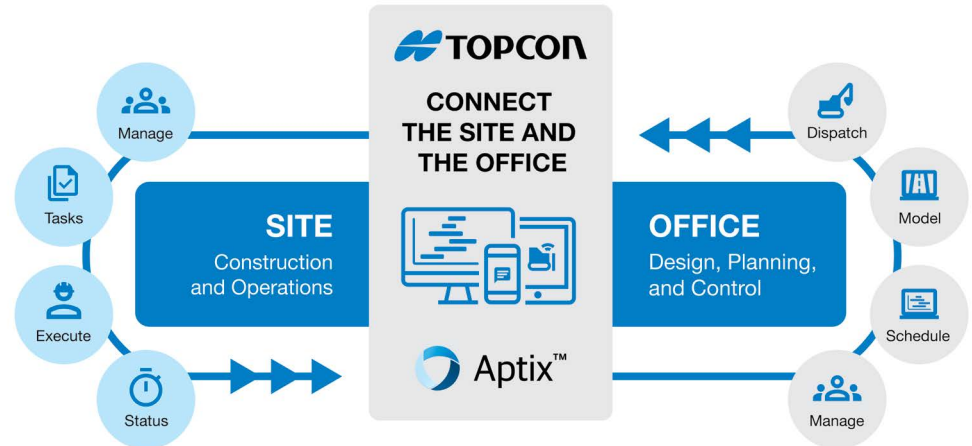


## Improve productivity, minimize rework and save time and money



Meet Aptix - your all-in-one solution for seamless integration of third-party apps and project data in construction. From planning to design and job site operations, it simplifies data exchange, automates workflows, and boosts project efficiencies.

Say goodbye to manual tasks and hello to a more profitable and efficient construction journey with Aptix!



[topconsolutions.com/aptix](http://topconsolutions.com/aptix)







# BUILDING DESIGN SOLUTIONS

## REVIT® ARCHITECTURE ESSENTIALS

Get introduced to Revit Architecture while learning the fundamental concepts of Building Information Modeling (BIM). Learn how to model essential building elements in 3D such as walls, stairs, doors, windows, etc.



### ONLINE:

4 days

TIME: 7:00-1:00 PDT

COST: \$1,195

### IN-PERSON:

3 days

TIME: 8:30-4:30

COST: \$1,195

WEB

### Online

June 4-7

June 25-28

July 9-12

August 13-16

PA

### Warrendale

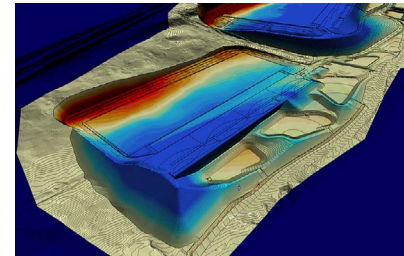
August 27-29



# Dirt Logic

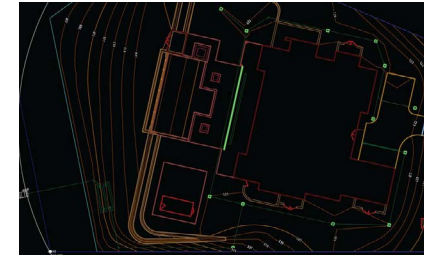
## Your one source solution for Earthwork Takeoffs and GPS Modeling needs

EARTHWORK TAKEOFFS | MODELS FOR GPS | FIELD SERVICES



### Earthwork Takeoffs

The process of turning 2-D grading plans into a 3-D 'earthwork takeoff' used by contractors for project bids



### GPS Modeling

We convert a two-dimensional, construction plan to a three-dimensional, electronic model

Topcon Solutions' Dirt Logic offering assists contractors, developers and civil engineers at any stage of a project to determine the most efficient way to deal with site grading. We provide practical 'what if' scenarios and solutions for any sized project, which reduces risk, project costs and overall design time.

[topconsolutions.com/dirtlogic](http://topconsolutions.com/dirtlogic)





# COLLABORATION

## BLUEBEAM REVU ESSENTIALS

Revu is built primarily for technical industries like architecture, engineering, construction, and oil & gas. Learn to streamline workflows throughout the construction process, from design review to project closeout and facilities management.



### ONLINE:

2 days

**TIME:** 8:00-2:00 PDT

**COST:** \$935

WEB

Online

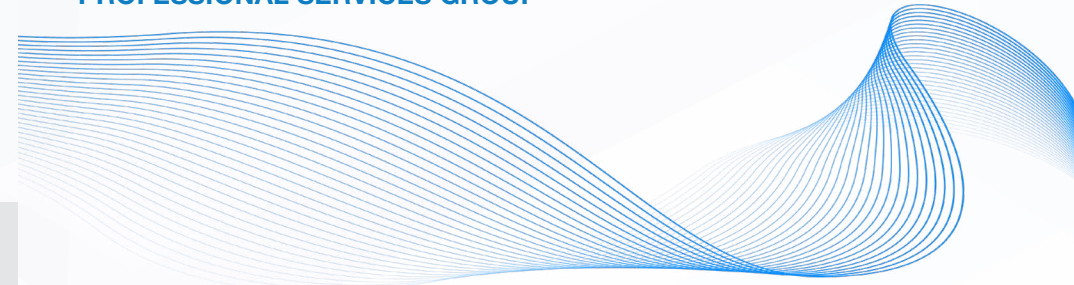
June 18-19

August 6-7



**Construction software for innovators.**

Architects, engineers & builders use Bluebeam software to finish projects faster, reduce risk, and maximize ROI.



## CUSTOMER CARE SUPPORT PROGRAM

We work hard to make sure you have the support you need when you need it. Whether on the job site or in the office, we can help!

### PREMIUM

Response time	Priority
Unlimited phone & email technical support	✓
Remote desktop assistance	✓
New customer & annual guided account navigation	✓
10% discount on public training classes	✓
10% discount on consulting & custom training	✓
Unlimited access to Solutions U	✓
Autodesk Briefcase tools plug-in <i>(ADSK customers only)</i>	✓



**YEAR-ROUND TRAINING SCHEDULE**



**TOPCON SOLUTIONS UNIVERSITY – ON DEMAND TRAINING COURSES**



**TECH SUPPORT PHONE & REMOTE DESKTOP**

**TOPCONSOLUTIONS.COM**

**(855) 289-1772**

**AUTODESK**

Platinum Partner



 **TOPCON**

**Solutions Store**

**REGISTER TODAY!** [topconsolutions.com/training](https://topconsolutions.com/training)