

Topcon CR-S1 / CR-S2

Capture reality with unmatched speed and flexibility.



Work faster and smarter with portable,
high-performance 3D scanning.
One-person operation and reliable data,
anywhere you need.

Learn more at topconpositioning.com

 **TOPCON**



How do you accelerate your reality capture projects?

Professionals in construction surveying, geospatial, and engineering need reliable spatial data capture in challenging environments, including outdoor, indoor, and GNSS-restricted areas. Applications span site documentation, utility mapping, volume calculations, progress monitoring, and underground data capture, requiring efficiency and accurate data in complex, time-sensitive settings.

The Topcon CR-S series is designed to address these challenges through advanced multi-sensor fusion, integrating LiDAR-based SLAM, visual SLAM, inertial measurements, and GNSS positioning enhanced with RTK corrections. This combined approach delivers stable and repeatable positioning performance, supporting reliable results across outdoor, indoor, and GNSS-challenged environments, including dense construction sites, tunnels and mining environments.

- » Capture data on the move with a truly portable solution.
- » Simplify your workflow from field capture to final processing.
- » Achieve survey-grade accuracy without the need for extensive setup.
- » Scan diverse environments, from wide open outdoor areas to complex indoor spaces.
- » Integrate seamlessly with Topcon software for a complete solution.

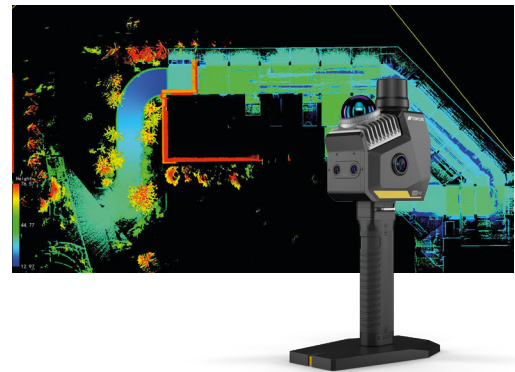


- 1 GNSS
- 2 LiDAR
- 3 Cameras (4x CR-S2 / 5x CR-S1)
- 4 Quick-swappable battery
- 5 Easy GCP collection



Capture with Confidence. Deliver with Precision

CR-S combines portable, one-person data capture with real-time point cloud preview, giving immediate confidence in coverage on site. Post-processing produces accurate 3D point clouds and orthophotos, supporting applications from volume measurement to comprehensive 3D site documentation.



Seamless Workflow, Precise Results

Unlike conventional solutions that rely on multiple devices or fragmented steps, the CR-S series supports a streamlined, end-to-end workflow - from data capture to final deliverables. Powered by advanced sensor fusion and robust hardware, it helps teams work faster in the field while delivering consistent, survey-grade results project after project.

Field and Desktop Software



MAGNET®
Flow

- Collection control software, compatible with both Android and iOS platforms.
- Supports collection control, project management, real-time point cloud browsing, and firmware upgrades, etc.



Scan the QR code to download the app to your phone.



MAGNET®
Bridge

- SLAM Data Processing workflow with continuous improvement in algorithms and data quality.
- Length, area and volume calculations for quick evaluations.
- Orthophoto creation to provide true-scale imagery.



The CR-S1 and CR-S2 are more than just a SLAM scanner. These tools are built for the modern professional who demands both performance and practicality. Check the datasheets for differences between models.

Get the data you need, when you need it.
Contact your local Topcon dealer to learn more.

Specifications subject to change without notice.
© 2026 Topcon Corporation. All rights reserved. 7010-2476 C 03/26

Learn more at topconpositioning.com

